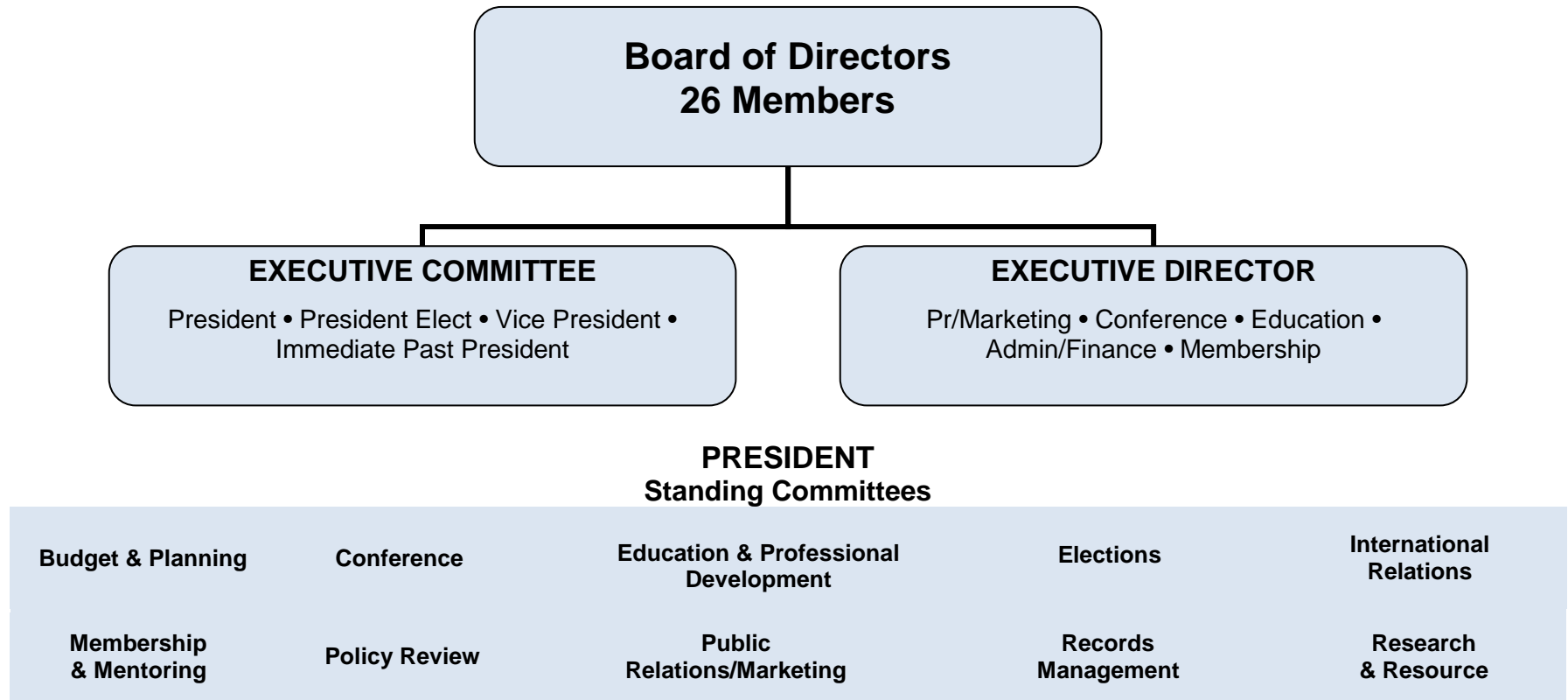


IIMC ORGANIZATIONAL STRUCTURE



Board of Directors

IIMC is governed by a 26-member board of Directors with 22 Directors from IIMC's 11 regions. The Board sets policy and provides organizational leadership and guidance. A four-person Executive Committee represents the Board. The Vice President is elected by all Members through a membership wide ballot. Other Board members are elected in their own Regions prior to the Annual Conference.

Committees

Hundreds of dedicated IIMC members volunteer their services and skills on one of IIMC's many Committees. Committee members recommend policies and work on programs ranging from election legislation updates to the dissemination of information on new technological advances affecting the Clerk's office. Committee contributions provide a cadre of direct benefits to the membership.